

INCOMAS

JOINT-STOCK COMPANY



***STEEL
PROCESSING***

Contents:

- **About the company**
- **Certificates and licenses**
- **Types of services and their description**
- **Commercial offer**
- **Partners**
- **Customers**
- **Contact us**

About the company

Having large production areas (with a span of 18 - 24 m, L = 120 m), building berths, lifting mechanisms (with a load capacity of 16 - 20 tons), warehouses, heavy motor vehicles,



About the company

"INCOMAŞ" JSC produces:

Welded steel structures:

- Steel structures for civil and industrial construction;
- Basic structures, bridges, fire ladders, platforms, water towers, tanks, chimneys, silos etc.

Machine tools and construction machinery:

- Silos for pouring concrete on construction sites. Volume - 1m³;
- "Farmer" - universal manual machine tool for production of concrete walling and paving slabs;
- Mixer for preparation of dry and semi-dry mixtures;
- Forms and equipment for concrete products;
- Non-standard equipment;
- Spare parts.

Services:

- Design of civil and industrial construction projects;
- Elaboration of documentation for detailed steel structures;
- Installation, technical support for the executed projects;
- Transportation of the products to the customer.

The company is authorized and certified:

- ISO 9001 – 2000
- SR EN 729 / ISO 3834

“INCOMAŞ” JSC guarantees **reliability and quality** of the implemented projects, the company has state licenses for all types of works performed.

Main types of products manufactured by “Incomaş” JSC:

- ✓ Production and installation of steel structures: industrial, office buildings, warehouses, refrigerators, stores, galleries, bridges, warehouses, pavilions, advertising arches, and much more.
- ✓ High level metal structures of high precision and complexity, including the use of composite materials in their manufacture and assembly.
- ✓ Non-standard equipment: transportation platforms with a load capacity of 1 to 120 tons, silos for storage of bulk materials (volume depends on the customer's demand), buckets for excavators and other equipment according to customer's drawings.

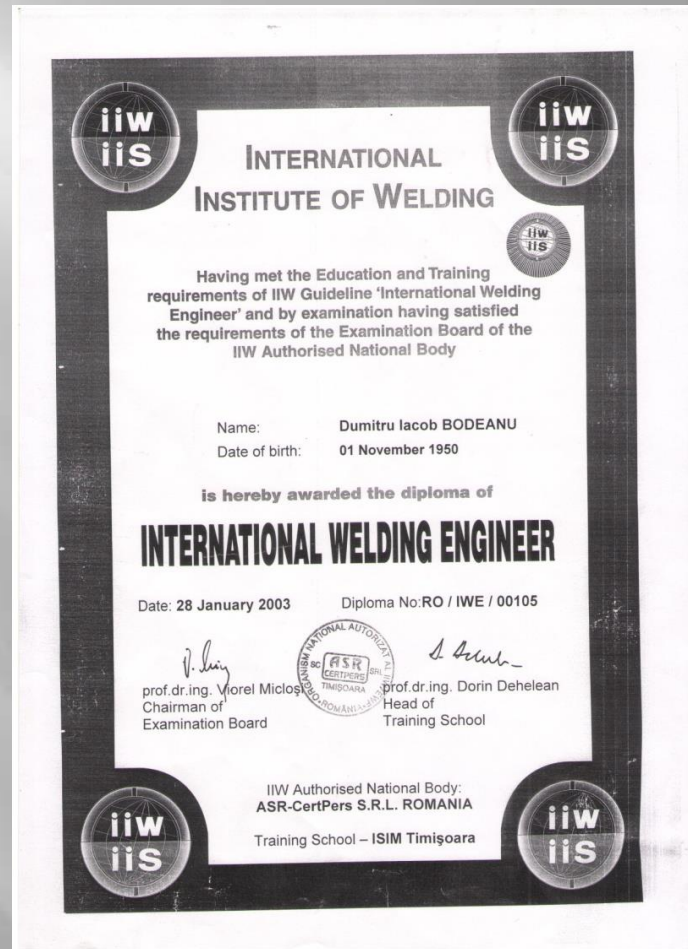
- ✓ Production of equipment for the building materials industry: machine tools for the production of building blocks and paving slabs "Farmer", mixers for dry and semi-dry mixtures, silos for distribution and supply of concrete, dry and semi-dry mixtures, forms and equipment for the manufacture of concrete products.
- ✓ Stone-cutting machines for natural stone production and spare parts for them: shafts, gears, pads, rollers, cutters.

Certificates and licenses

“INCOMAȘ” JSC has state licenses for all types of works performed:



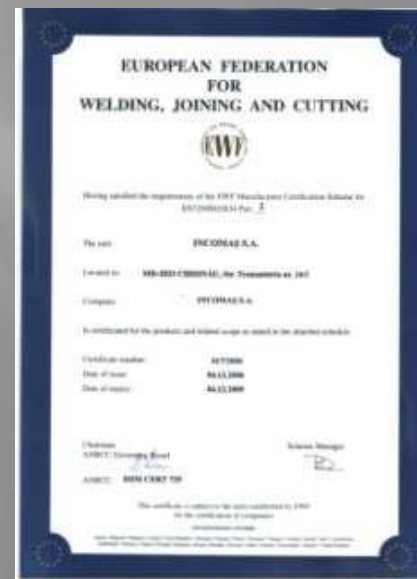
International Welding Engineer certificate:





ISO 9001-2000

EN 729/ ISO 3834



Types of services

**Steel structures
(manufacture and installation)**

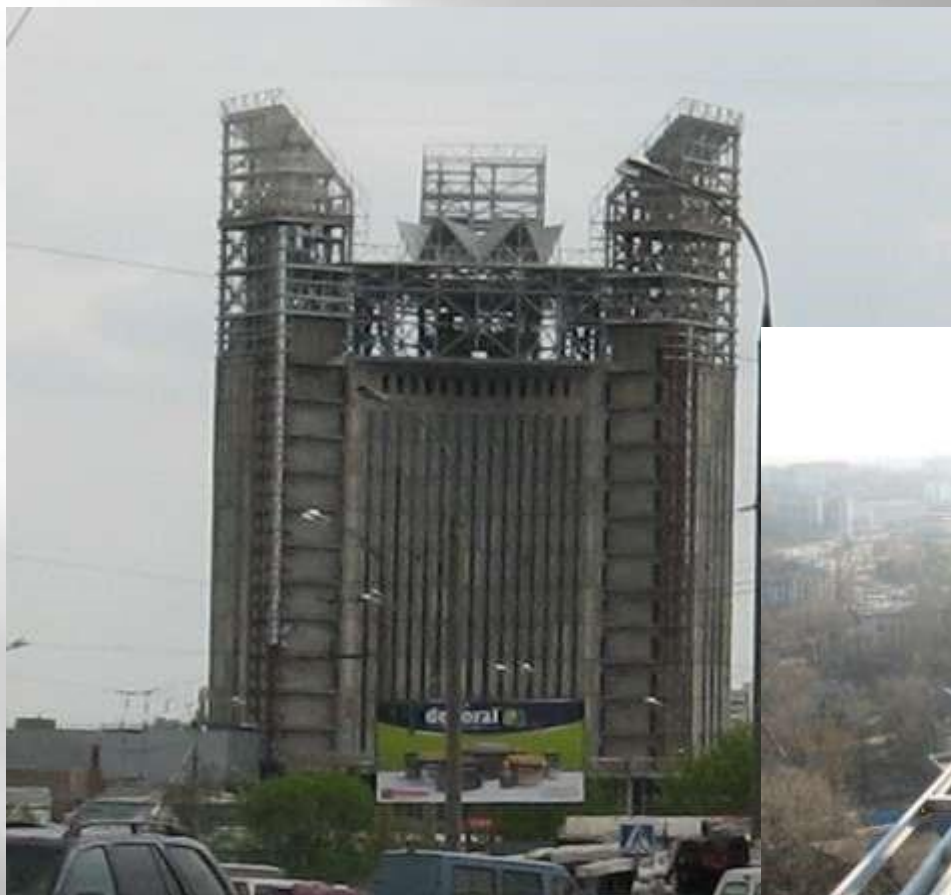
Steel structures of a furniture warehouse/store, Truseni village



Reconstruction of the “Atrium” commercial center,
4 Albisoara street, Chisinau



Reconstruction of a business center, 4 Albisoara street, Chisinau



Reconstruction of the “Grand Hall” commercial center, Chisinau



Reconstruction of a warehouse/store using welded beams



**Steel structures of the production premises
at the plant “Lafarge Ciment Moldova”**



Reconstruction of the 5* Radisson Blu Leograd Hotel & Convention Center



**Steel structures of the bridge on Decebal street, Chisinau,
“Jumbo” commercial center**



Decorative crosses of the St. Peter and Paul Church, Chisinau



Steel structures of a roof without a central pillar



Steel structures of some stairs



Partners



DIALIN EXIM



Inconex-Com SRL



Midanat Construct SRL



Elmeron



KOMPASS.md



Customers



Recommendation letters

27-036617 2010 201 1281-28-41-48 4 024 201 4970 0791

Securitatea de
Intermedieri Financiare
B. Moldova, etim. Chişinău
nr. Franconi, 71

Consit PRO

Oficiul de Registrare
0497218400154
P. Moldova, etim. Chişinău
nr. Franconi, 71

Scrisoare de recomandare

„Incomas” SA este una din firmele prezente în construcţie din Republica Moldova.
Firma „Consit PRO” SRL, cunoscută ca firma „Incomas” SA, pe durata mai mult de 11 ani şi
este ghită tot timpul înaltă onestă şi interes reciproc, deoarece are deosebite cunoştinţe tehnice
speciale, timpuri şi cunoştinţe pentru beneficiari. Acei rezultă tot la cer la proiectele:
Reconstrucţia clădirii de învăţământ „JTM”, etim. Chişinău, Magazinelor „Renata”, Atina de
publicitate Clasa nr. 661 Şcolii nr. 12 Chişinău şi altele.

Vărem să recomandăm operativitatea şi calitatea înaltă a lucrărilor de proiectare şi
construcţie, ceea ce este un merit al tuturor oamenilor care lucrează în firmă.
Dorim ca, atunci când vă întâlniţi şi înţelegi pentru evaluarea şi recomandarea şi altele
eventuali beneficiarii să aleagă această firmă în calitate de angajament.

Director  Claudiu I.



CIF 18036904013
MFO MCDIHD00038

num 22423061407
BC "Moldbankbank" SA

nr. 28-28-13
nr. 28-41-48

 Model

MD 2028, • Calea nr. 1, Timp, 1, 6601 0800001-0511,
nr. 22421184 + 95 "FARMAPRIM" SA (UEPRO VEREZO BANCA, SRIET code: ECOMMDI0121471,
Tel.: +373-22-28-18-45, Telefax: +373-22-28-18-46, www.farmaprim.md, e-mail: farmaprim@farmaprim.md

nr. SP-08117, din 08.08.2011



SA INCOMAS
D-lui Director Nistor Andrius

Sinatu d-lu Andrius,

Prin prezenta, compania farmaceutică Farmaprim SRL îşi exprimă înaltrele
consideraţiuni şi Vă înţelegă despre darea în exploatare de către compania
noastră a noului complex farmaceutic de producere din s. Pramboci, r-nul Ciuleşti.

Cu această ocazie, Vă aducem ştiinţă mulţumiri, atit Dvs. cit şi companiei
Incomas, pentru apărut adin la realizarea acestui proiect. Ţinem să menţionăm, că
pe tot parcursul colaborării noastre, compania Incomas s-a manifestat ca un
partener profesionist, constructiv, receptiv şi algar.

Astfel, în continuare, Vă urăm succes în realizarea a toci proiecte, ce ar
permite ridicarea brandului "Incomas" în niveleturi şi mai înalte.

Cu deosebit respect,

Director General
FARMAPRIM SRL



Ion BORGHAC

9.3
6.2 10.3
Page 1 din 1

Republica Moldova

"MANOLII" Ltd.

Moldova, Kishinev, Magistral, 24
Tel. (+3732) - 27 42 00
Fax. (+3732) - 27 42 25
email: grandfal@getta.md



Republica Moldova

"MANOLII" SRL

Moldova, Kishinev, Magistral, 24
Tel. (+3732) - 27 42 00
Fax. (+3732) - 27 42 25
email: Grandfal@getta.md

nr. 34/6
6.24.10.2011

Generalul director
"INCOMAS" SA
Clauu I.I.

Республика Молдова
Фирма "МАНОЛИИ" ООО
Молдова, Кишинев, Магистраль, 24
Тел. (+3732) - 27 42 00
Факс (+3732) - 27 42 25
e-mail: grandfal@getta.md

Республика Молдова
Фирма "МАНОЛИИ" ООО
Молдова, Кишинев, Магистраль, 24
Тел. (+3732) - 27 42 00
Факс (+3732) - 27 42 25
e-mail: grandfal@getta.md

С уважением,
Директор "Манолли" С.Р.Л.



Claudiu I.I.

We are open for any business proposals regarding mutually beneficial cooperation, production of new types of products and equipment repair.

Contact us:

- Address:
16/1 Transnistria street
Chisinau MD 2023
Republic of Moldova
- Tel.: (+373 22) 47-10-10; (+373 22) 47-53-34
- Fax: (+373 22) 47-02-73
- www.incomas.md
- E-mail: marketing@incomas.md
incomas2003@yahoo.com
incomas@mail.ru

Location:

